



ADR-Auto V2.0 Range

Accurate and Consistent Testing

New

- ▶ New touch screen user interface to reduce set-up and training time
- ▶ Test data enhancements for improved traceability
- ▶ High accuracy and test repeatability
- ▶ 3 year warranty

The 2011 enhanced ADR-Auto V2.0 Compression Range

Whilst celebrating our 50th anniversary, ELE International is pleased to announce the release of a new digital console used in its ADR-Auto V2.0 range of automatic compression machines.

Whilst delivering all of the features and reputation of the established ADR-Auto V2.0 range with its 20 year design history, the new and improved user interface provides a high quality platform for testing that will enhance the performance of our compression machines. New, sophisticated electronics further the benefits of a closed-loop operation in testing concrete and cement/mortar samples, satisfying the requirements of Quality Control Managers, Lab Managers and Technicians alike.

Accuracy & Savings

The NEW ADR-Auto V2.0 range, with 145mm (5.7") touch screen interface and intuitive menu driven operation reduces the time taken to set up the machine and perform tests, reducing the time to train staff by up to 25%.

Most testing errors produce lower strength results. Non-compliant loading rates can generate errors in measured strength. With the latest closed-loop technology used in the ADR-Auto V2.0, the most effective cement ratios can be used with confidence.

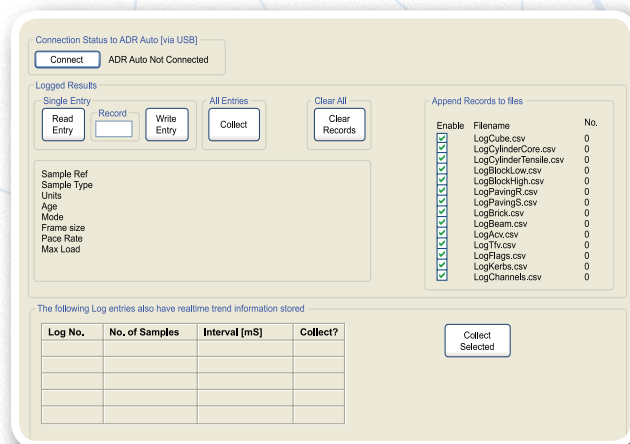
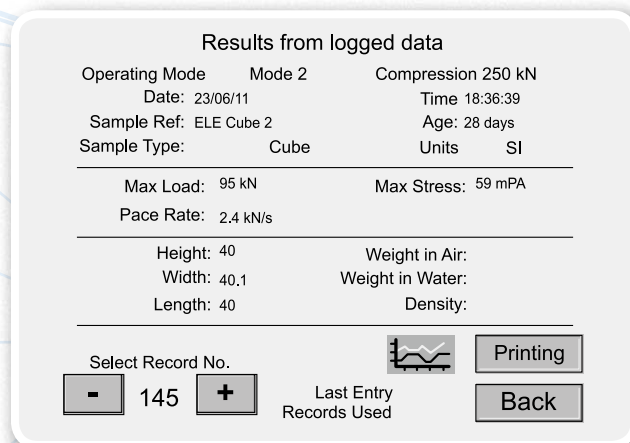
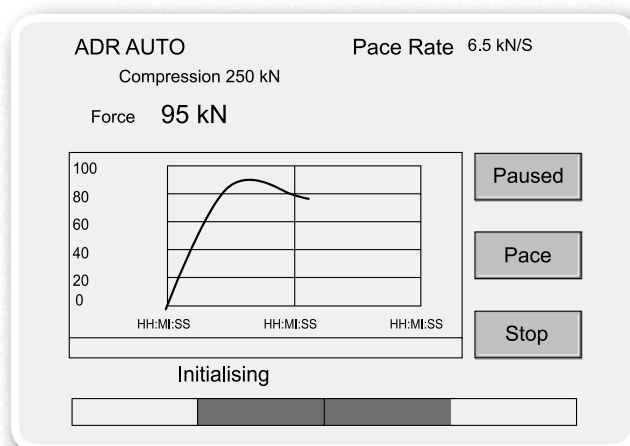
Traceability & Data Quality

The ADR-Auto V2.0 now provides improved data quality and traceability in due diligence cases – it is now possible to display traceability all the way from the machine/user to the accreditation body, increasing your reputation and peace of mind – all test results now come complete with the machine serial number attached.

Prove your service quality – the ADR-Auto V2.0 now plots load vs time in real-time, proving full compliance to the testing standard. This data can be stored for later use or for detailed analysis of the concrete production.

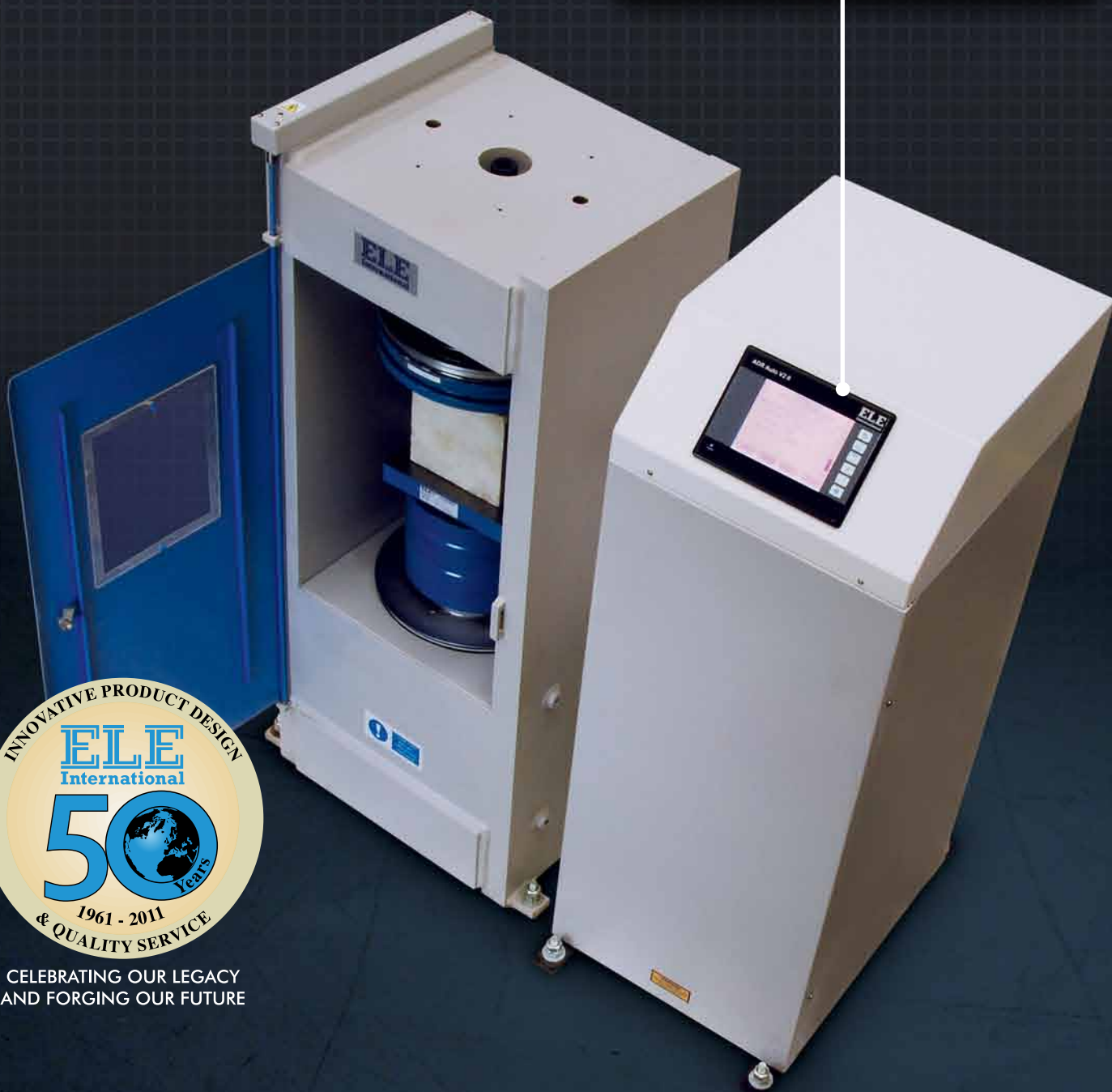
User Safety

Full safety gates as standard, total systems diagnostics, ram run-out switches and overload warnings ensure the safety of your employees and the reliability of your machine.



The new ADR-Auto V2.0 series compression testing machine range

Capacity	2000kN	2000kN	3000kN	250/25
Type	Standard	EN12390	EN12390	Cement EN 196
ADR-Auto (Automatic testing cycle)	✓	✓	✓	✓
Dual-Frame	Not available	2000/250	2000/250	



CELEBRATING OUR LEGACY
AND FORGING OUR FUTURE

ADR-Auto V2.0 Compression Machine Specifications

Machine Series	36-4125	36-4150	36-4165	39-6160
Standards	–	EN 12390	EN 12390	EN196
Frame				
Frame Type	Welded	Welded	Welded	Welded/2 column
Capacity	2000kN	2000kN	3000kN	25kN , 250kN
Max Vertical Clearance	340 mm	340 mm	340 mm	230 mm
Max Horizontal Clearance	325 mm	355 mm	310 mm	160 mm
Platen Sizes	Lower, Upper 222mm dia	Lower 220mm sq, Upper 300mm dia	Lower 220mm sq, Upper 300mm dia	150 mm dia
Max ram travel	50 mm	50 mm	50 mm	15 mm
Samples				
Cubes (Concrete)	Up to 150 mm	Up to 200 mm	Up to 200 mm	–
Cylinders (Concrete)	Up to 160x320 mm	Up to 160x320 mm	Up to 160x320 mm	Up to 100 mm
Blocks	n/a	Via optional Platen Handling System	Via optional Platen Handling System	n/a
40 mm, 50 mm (2") Cubes	n/a	Dual Frame Model	n/a	Yes
40.1x40x160 mm (Compression)	n/a	Dual Frame Model	n/a	Yes
40.1x40x160 mm (Flexure)	n/a	Dual Frame Model	n/a	Yes
TFV & ACV	Yes	Yes	Yes	n/a
Hydraulics				
Rapid Approach	Yes	Yes	Yes	Not required
Hydraulic pump	Variable Output	Variable Output	Variable Output	Variable Output
Data Comms				
Printer, PC download, USB, RS232 (option to print)	Yes	Yes	Yes	Yes
Screen				
145 mm (5.7") Touch Screen with Graphical Display	Yes	Yes	Yes	Yes
Platens				
3rd Party Certified	–	Yes	Yes	Yes
Misc				
Sample Alignment	Engraved Cross Hairs	Location Fixtures	Location Fixtures	Location Fixtures
Pace Rate Indicator	Yes	Yes	Yes	Yes
Load v Time, Goodness of Test	Yes	Yes	Yes	Yes
Analysis of Trend Data	Yes	Yes	Yes	Yes
Memory of Test Results	Yes	Yes	Yes	Yes

ELE International
 Chartmoor Road
 Chartwell Business Park
 Leighton Buzzard, Bedfordshire
 LU7 4WG. United Kingdom

Tel: +44 (0) 1525 249 200

Fax: +44 (0) 1525 249 249

Email: ele@eleint.co.uk

www.ele.com

Distributor: